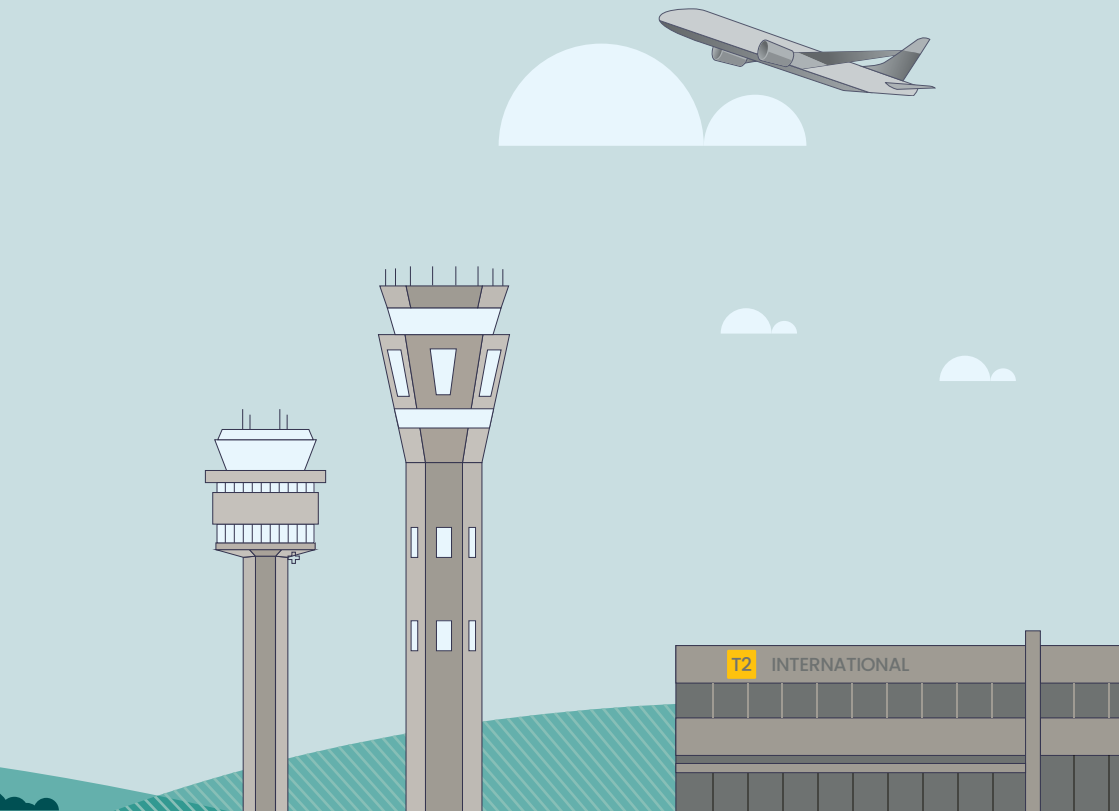


Activity Book





"Djeenong" Artwork by Alex Kerr (Wurundjeri Artist) 21st Feb 2025




Acknowledgment of Country

Melbourne Airport acknowledges the First Nations of the lands on which our airport operates. Melbourne Airport is committed to working closely with First Nations people in Melbourne to deepen our understanding about how our airport can continue to operate and develop in a way that recognises and celebrates the airports' First Nations cultural heritage. Melbourne Airport pays respect to their Elders past and present.

About Melbourne Airport

Airports are gateways to adventure, places of excitement and intrigue! Melbourne Airport is the largest 24-hour airport in Australia!

Ever wondered what type of aeroplane you're looking at? Or how to know what's flying overhead? Then this book is your ticket to fun!

-  Become a junior plane spotter and learn the best tips for spotting planes and snapping amazing photos.
-  Discover all the different aircraft that visit the airport.
-  Say hi to Tanya, our Airside Safety Officer, and find out what she does to keep everyone safe on the airfield.
-  There's also a stack of fun facts, stickers and some puzzles to test your brainpower.

So grab your binoculars and cameras and get ready for an adventure that will make you love airports and aviation even more.

A few fun facts...



Plans to build Melbourne Airport in Tullamarine were announced in **1959!**



Our two solar farms produce enough electricity to power **10,000 homes**



Melbourne Airport opened in **July 1970**. Since opening almost **780 Million passengers** have passed through the airport.



Melbourne Airport is located on the land of the **Wurundjeri Woi-wurrung people**

Have you seen this aircraft at Melbourne Airport?

Boeing 737-800 / Boeing 737 MAX 8



Length 39.5m

Wingspan 35.8m

Key Features

- Two engines
- Pointed nose
- Triangular section at the front of the tail
- Winglets at the end of each wing



Tips from junior plane spotter Christian.



- 1 To have a steady hand especially for panning and get out of auto modes (like full auto, sport mode and program mode).
- 2 In shutter mode use 1/2000 unless doing a pan.
- 3 Make sure you get the full aircraft in the photo.
- 4 Try doing some silhouette photos with the orange light and sun in the background for sunset and sunrise.
- 5 Try to get out when there is some great contrast in the clouds, it produces a very cool effect even in golden hour.



My favourite livery

On the 737 it's the Qantas Retro Roo (1959). It's my favourite livery because it really shows what Qantas was like back in the day, and it's really cool to see and to take photos of. It looks amazing in golden hour light.



My favourite angle

My favourite angle is the side of the aircraft because it shows the whole aircraft and livery in the photo and looks good. Or even a head on shot and a close up of the landing.



The Boeing 737-800, as photographed by Christian



Christian
M. Despodis

Have you seen this aircraft at Melbourne Airport?

Airbus A320/A320 neo



Length

37.57m

Wingspan

35.8m

Key Features

- Two engines
- A rounder nose
- No triangular section in front of the tail

Jetstar 



AIR NEW ZEALAND 





Tips from junior plane spotter Adrian.

The Airbus A320, as photographed by Adrian



- 1 First, go to 'FlightRadar24.com' to find out when the planes are arriving or departing. Zoom in to Melbourne Airport and click on the blue location icon to find information.
- 2 Check the weather at 'Windy.com' to see everything the weather is doing as well as forecasting days ahead. Wind direction is a crucial factor when spotting, as it will determine the direction that the planes are departing and arriving. By using Windy.com you can see the wind direction for that day.



My favourite angle

For Jetstar's A320, it is side on. To get these side on shots, head to location like Uniting Lane – Bulla (North end of airport, runway 16).

If you prefer overhead shots, like take-offs from runway 34, or exhilarating low overhead arrivals on runway 16, locations such as the aircraft viewing area carpark at the northern end of the airport, at Oaklands Road intersection, will give you that. There's usually a food van offering Gelato or hot snacks that'll top off your overhead spotting experience!



Have you seen this aircraft at Melbourne Airport?

Airbus A321/A321 neo/A321 XLR



Length

44.51m

Wingspan

35.8m

Key Features

- Two engines
- A rounder nose
- Winglets on the wings
- No triangular section in front of the tail

Jetstar 



AIR NEW ZEALAND 



Tips from junior plane spotter Jess.



- 1** I love planes, and I'm just starting to explore photography. My biggest tip? Keep practicing! It's so satisfying to look back at older shots and see how much my composition and technique have improved!.
- 2** Keep things fresh! Experiment with different times of day (the sunsets at Melbourne Airport have a magical glow) and variety of spots around the airport, like Sunbury Road, Loemans Road, Gate 10 at Terminal 3 (Virgin Australia), or the rooftop of the Terminal 4 car park.



My top tip

Every spotters location around Melbourne Airport is different, try them all to get a new perspective every time.



 **QANTAS**



Have you seen this aircraft at Melbourne Airport?

Boeing 777-300ER



Length 73.9m

Wingspan 64.8m

Key Features

- Twin engine
- Wide body
- Raked and extended wing tips
- Five exit doors



ETIHAD





Tips from junior plane spotter Meg.



My favourite angles

Don't just shoot side on shots, make your photos more interesting by shooting from all angles, take many so you have plenty to choose from.



- 1** You don't need the most expensive camera to start, but a telephoto lens such as a 70-300mm, is very helpful to get close-up shots from a distance.
- 2** Use tracking apps like Flightradar24.com to know which aircraft is arriving and when, so you can be ready for the perfect shot.
- 3** Include the environment in some shots. Use puddles for reflections, or dramatic clouds to add atmosphere to your photos.
- 4** If you are taking photos through windows inside the airport terminal, bring a small cloth to clean smudges off the windows before shooting photos through them.

Have you seen this aircraft at Melbourne Airport?

Boeing 787



Length

57-63m

Wingspan

60m

Key Features

- Two engines
- Swept wings with no winglets
- Four doors per side
- Pointed nose
- Noise reducing chevrons on its engines



Tips from junior plane spotter Christian.



- 1 My tip would be to get out of auto mode and start going into shutter mode or aperture mode, or even manual mode.
- 2 For shutter mode, I would put 1/2000 or use the reciprocal rule, which is what ever your focal length, is your minimum shutter speed. For example, focal length: 200mm minimum shutter speed: 1/200. and for aperture mode f.1.



My favourite livery

My favourite livery design on the 787 is Qantas Yam Dreaming.



The 787, as photographed by Christian



Have you seen this aircraft at Melbourne Airport?

Airbus A350



Length

66.8–73.8m

Wingspan

64.7m

Key Features

- Two engines
- Winglets on the wings
- Four doors per side



Vietnam Airlines



 DELTA



Inspecting the runway with Airside Safety Officer Tanya



Did you know...

The airside of an airport defines the aircraft operations area and its adjacent area where aircraft and ground support vehicles operate.

Access to the airside is restricted and requires passing through security checkpoints.



When I am inspecting the Melbourne Airport runways to keep them safe for all arriving and departing aircraft, these are some of the things I look for:

- 1 Check the surface pavement for cracks, loose rocks and holes.
- 2 Check the lights are working along the edge of the runway, the centre line and on the approach.
- 3 Check for any wildlife such as rabbits, birds or foxes that may be near the runway and scare them away with our car horn and sirens.
- 4 Check all signs are visible and the lawn is mowed.



An A350, as photographed by Christian



Have you seen this aircraft at Melbourne Airport?

Airbus A380



Length

72.7m

Wingspan

79.8m

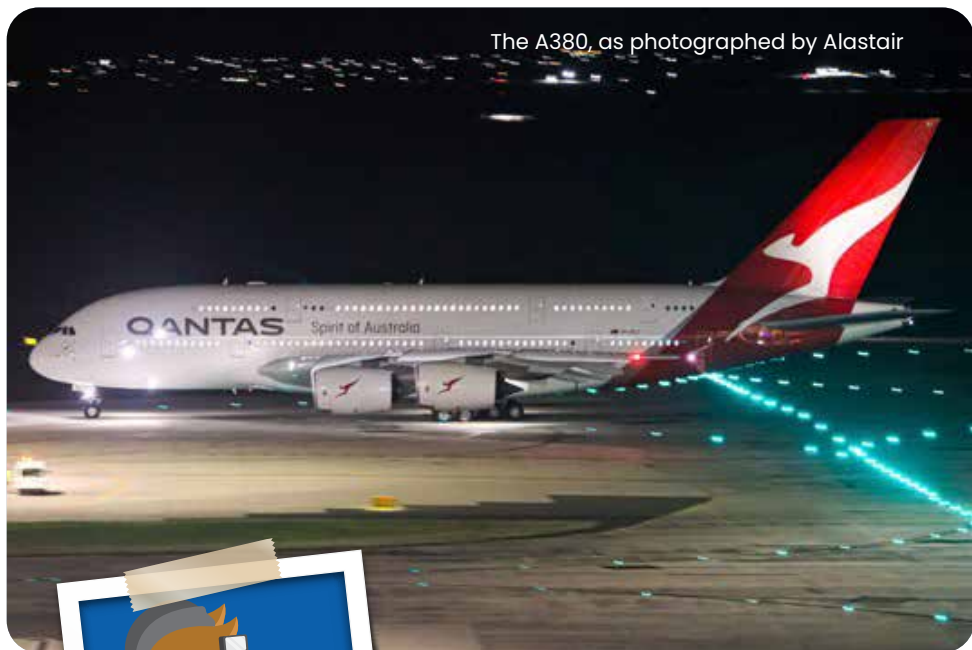
Key Features

- Four engines
- Two passenger decks (look for windows)
- Bulbous nose
- 22 wheels



Tips from junior plane spotter Alastair.

The A380, as photographed by Alastair



- 1 If you are out at the airport at night and see the A380, try to hold your camera as still as possible so you can get the clearest photo.
- 2 Try to lean your camera on something solid and use live focus to see what the camera is focusing on.



My favourite livery

On the A380, it's the Emirates blue Dubai expo livery because of its unique design and colours.



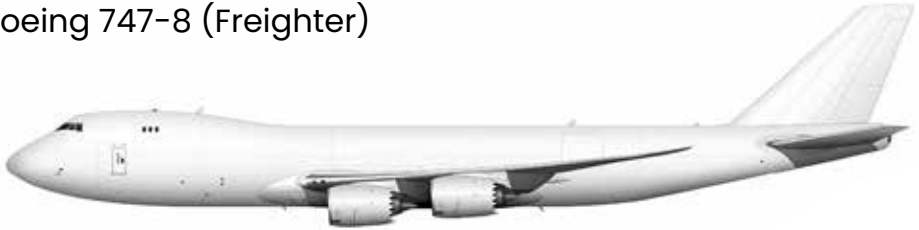
My favourite angle

The best place for spotting the A380 at night time is the T4 car park because it is lighter up there than Operations Road at night.



Have you seen any of these aircraft at Melbourne Airport?

Boeing 747-8 (Freighter)



Length

76.3m

Wingspan

68.4m

Key Features

- Four engines
- A 'hump' at the front of the aircraft
- Noise reducing chevrons on its engines



Dash-8 Q400



Length 32.8m

Wingspan 28.4m

Key Features

- Two turboprop engines (propellers)
- Wings connect to the top of the fuselage
- T shaped tail
- Wheels under propellers



Airbus A220



Length 35.0m

Wingspan 35.1m

Key Features

- Two engines
- Pointy nose
- Large windows
- Lower noise levels



How many of these tails have you spotted?



Air Asia

Air China

Air India

Air New Zealand

Asiana

Batik Air



Beijing Capital Airlines

Cathay Pacific

Cebu Pacific

China Airlines

China Eastern Airlines

China Southern Airlines



Delta Airlines

Emirates

Etihad

Fiji Air

Garuda Indonesia

Hong Kong & Hainan Airlines



Japan Airlines

Jetstar

Juneyao Airlines

Latam Airlines

Link Airways

Malaysia Airlines



Philippines Airlines

Qantas

Qatar Airways

Rex Airlines

Royal Brunei

Scoot



Shenzhen Airlines

Sichuan Airlines

Singapore Airlines

Sri Lankan Airlines

Thai Airways

Tianjin Airlines



Turkish Airlines

United Airlines

Vietjet

Vietnam Airlines

Virgin Australia

Xiamen Air

Word Search

| | | | | | | | | | | | | | | | | | | | |
|---|---|---|---|---|---|---|---|---|---|---|---|---|---|---|---|---|---|---|---|
| Q | N | U | N | C | T | D | K | N | X | L | G | J | T | O | L | I | P | T | T |
| Q | Q | T | R | Y | M | K | E | B | G | A | L | V | N | H | K | O | Y | V | C |
| A | G | R | P | D | P | K | M | S | I | N | L | J | Z | G | Q | W | S | V | E |
| R | C | A | J | A | K | H | Y | X | T | L | I | X | A | C | G | X | P | M | T |
| R | T | V | F | C | S | O | H | A | R | I | W | D | E | E | U | Z | Q | I | A |
| I | R | E | Y | T | X | S | X | U | Y | O | N | R | R | W | E | P | Z | Z | H |
| V | O | L | A | R | U | K | P | R | E | F | U | A | I | A | Q | E | Z | E | L |
| A | P | Y | S | O | J | K | Y | O | N | T | K | N | T | W | O | G | G | D | O |
| L | S | L | Z | P | Z | R | W | F | R | N | V | U | M | I | X | B | F | U | K |
| H | N | I | G | R | N | R | H | A | U | T | N | Z | K | F | O | N | T | Q | C |
| O | A | M | A | I | K | F | P | E | O | S | I | V | D | R | I | N | L | H | D |
| N | R | A | K | A | G | E | G | G | J | L | S | T | G | B | K | T | W | O | P |
| A | T | F | P | H | D | Q | L | A | W | A | S | E | A | S | F | L | T | P | A |
| G | K | T | A | V | P | U | D | G | V | F | E | C | O | J | T | C | X | Z | S |
| Y | A | D | I | L | O | H | D | G | D | Z | W | C | Z | V | A | S | D | D | S |
| F | M | F | D | Z | U | I | C | U | W | D | W | U | C | O | R | S | S | H | E |
| J | U | U | C | C | X | L | B | L | E | F | Z | D | P | O | M | V | O | Y | N |
| G | Y | X | S | A | R | V | E | M | C | Z | W | A | Y | X | A | K | B | C | G |
| A | J | R | K | T | Y | B | M | N | U | Z | H | B | J | P | C | E | P | P | E |
| T | Q | T | G | Z | B | Z | N | N | A | Y | B | Q | T | E | Z | S | N | G | R |
| A | T | F | P | H | D | Q | L | A | W | A | S | E | A | S | F | L | T | P | A |

Find these words...

| | | | |
|----------|-------------|-----------|-----------|
| AIRPORT | DEPARTURE | JOURNEY | PILOT |
| ARRIVAL | DESTINATION | LUGGAGE | TARMAC |
| BOARDING | FAMILY | PASSENGER | TRANSPORT |
| CABIN | HOLIDAY | PASSPORT | TRAVEL |

Take the airport adventure quiz

Choose the best answer for each question

1 What is the long path on the ground where planes take off and land called?

- A road
- A runway
- A bridge

2 When you fly, what do you have to show to get on the plane?

- A driver's license
- A boarding pass
- A library card

3 What is the person who flies the plane called?

- A flight attendant
- A pilot
- A mechanic

4 What is the job of the person who helps passengers find their seats?

- A pilot
- A gate agent
- A flight attendant

5 When going through security, what do you put your bags on to be checked?

- A conveyor belt
- A moving walkway
- A shopping cart

6 What is the special code on your ticket that tells the airport where you are going?

- Your address
- Your flight number
- Your phone number

7 What is the building at the airport where you wait for your plane called?

- The terminal
- The parking lot
- The control tower

8 What do you call when the plane moves forward on the runway?

- Landing
- Taxiing
- Takeoff

9 What machine do you look at to find out which gate your flight leaves from?

- A TV map
- Flight information display system
- A clock

10 What is the small vehicle that carries the luggage to and from the airplane?

- A baggage cart
- A baggage handler
- A shuttle bus

11 What do you call a person that works in the control tower at the airport?

- A pilot
- Air traffic controller
- An engineer

12 What do you call the place that planes park when they are not flying?

- Terminal
- Hangar
- Runway

Spot the 5 differences
between the pictures below



QUIZ ANSWERS: **1** A runway, **2** A boarding pass, **3** A pilot, **4** A flight attendant, **5** A conveyor belt, **6** Your flight number, **7** The airport terminal, **8** Taxiing, **9** A flight information display screen, **10** A baggage cart, **11** Air traffic controller, **10** Hangar.

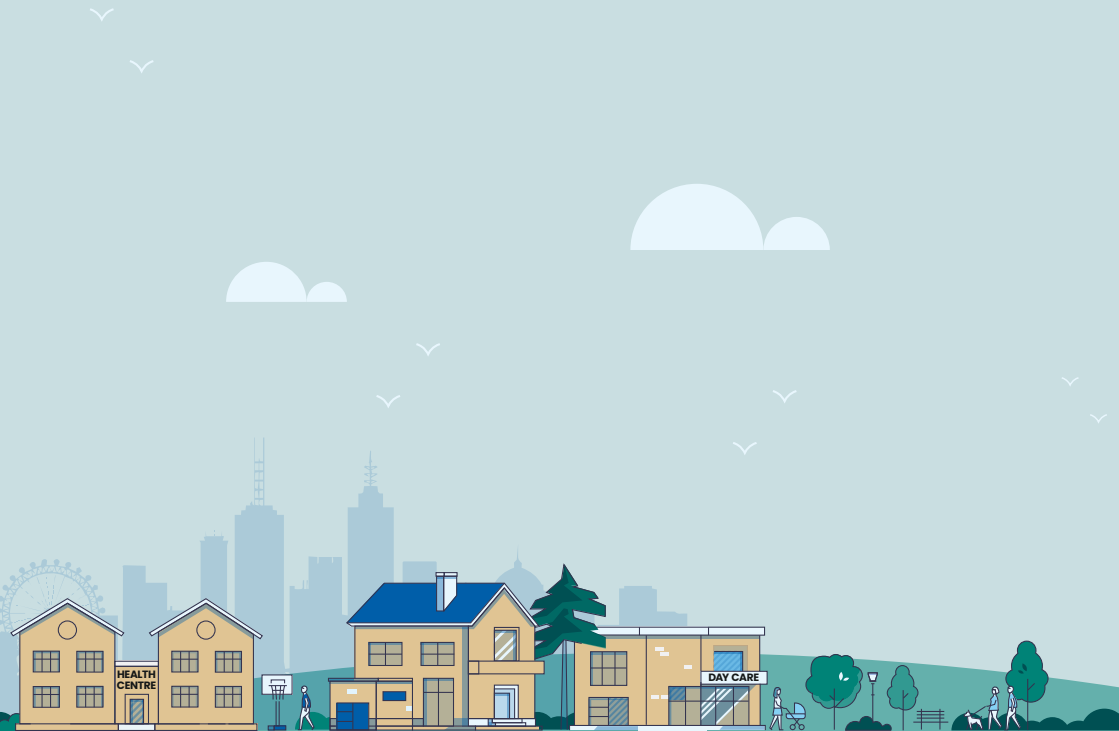
Australia Pacific Airports (Melbourne)
ACN 076 999 114

Level 2, T4 Melbourne Airport
Management, Victoria 3045
Australia

Locked Bag 16, Tullamarine,
Victoria 3043 Australia

+61 3 9297 1600

www.melbourneairport.com.au



MELBOURNE AIRPORT