

Runway use at Melbourne Airport

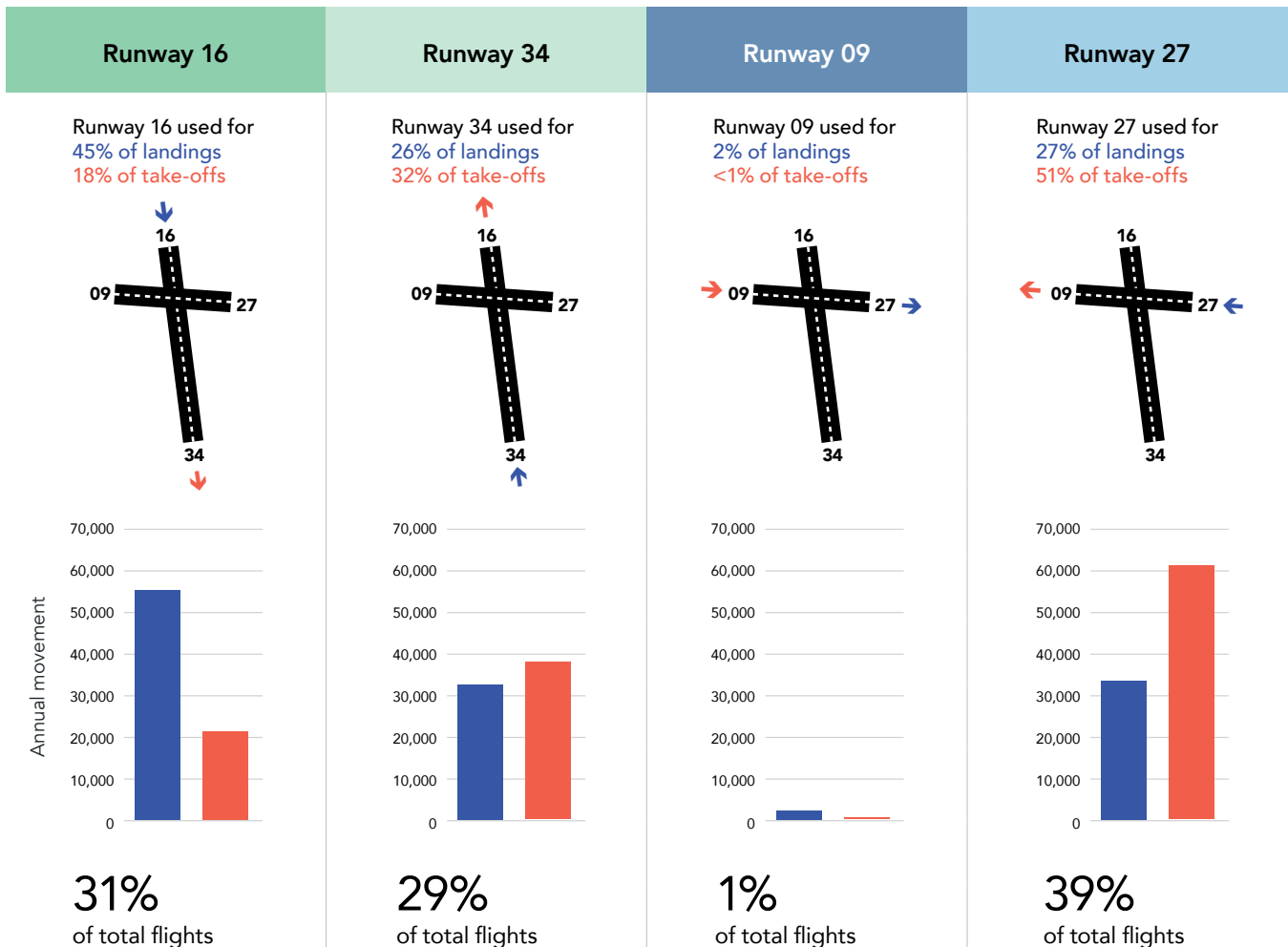
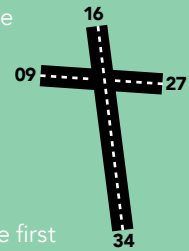
Fact Sheet

How often is each runway used

Runway utilisation data from 2019 was used as the planning baseline to prepare the Major Development Plan for Melbourne Airport's Third Runway as it shows our peak runway use before Covid-19. The distribution of flights during 2019 is shown below, separated by arrivals and departures.

Although Covid-19 significantly impacted the aviation industry, its disruption was short term. Current forecasts reflect a return to 2019-equivalent activity in 2024. In 2023 Melbourne Airport was the first Australian major capital city airport to exceed 100% of pre-pandemic capacity in the international market.

Melbourne Airport expects that demand will continue to grow, and that the need for a third runway remains.





Day runway use (0600-2300)

	Runway 16	Runway 34	Runway 09	Runway 27
Arrivals	45%	26%	<2%	27%
Departures	17%	31%	<1%	52%

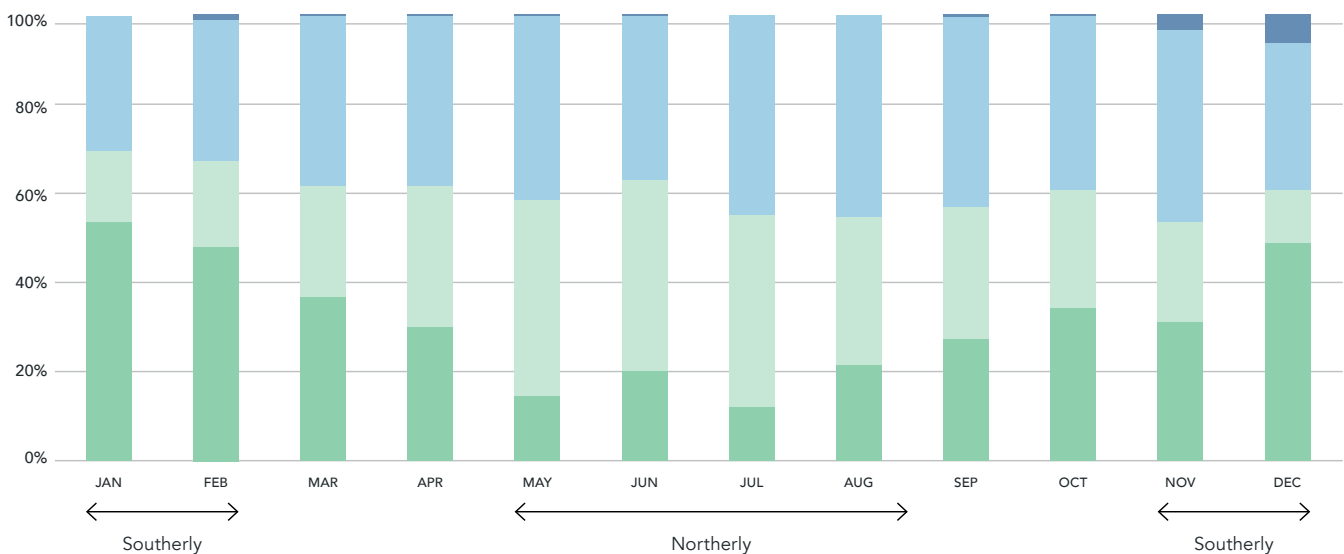


Night runway use (2300-0600)

	Runway 16	Runway 34	Runway 09	Runway 27
Arrivals	43%	33%	<1%	24%
Departures	26%	41%	<1%	33%

Runway use is affected by seasonal wind directions

- During the summer months (Nov-Feb) Runway 16 is mainly used for aircraft to fly into southerly winds
- During the winter months (May-Aug) Runway 34 is mainly used for aircraft to fly into northerly winds



What are the runway operating modes

Runway operating modes are listed in the Noise Abatement Procedures (NAP). These are available on Airservices Australia's website: www.airservicesaustralia.com/about-us/about-our-operations/noise-abatement-procedures/

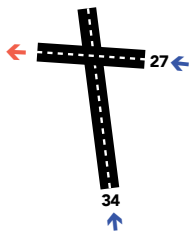
Runway usage for 2019

High Capacity Arrivals – Land and Hold Short Operations (LAHSO)

Arrivals Runway 27 & Runway 34

Departures Runway 27

5.4%

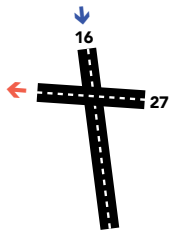


Preferred mode of operating runways

Arrivals Runway 16

Departures Runway 27

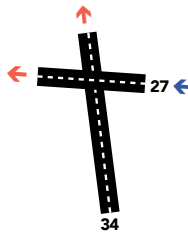
33.9%



Arrivals Runway 27

Departures Runway 27 & 34

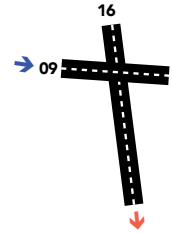
21.2%



Arrivals Runway 09

Departures Runway 16

1.3%

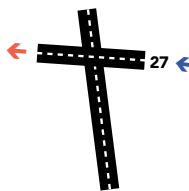


Single runway modes

Arrivals Runway 27

Departures Runway 27

10.2%



Arrivals Runway 34

Departures Runway 34

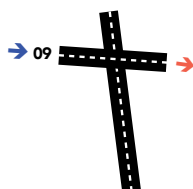
18.1%



Arrivals Runway 09

Departures Runway 09

<1%



Arrivals Runway 16

Departures Runway 16

9.8%



Source Melbourne Airport based on automatic terminal information service (ATIS) data for 2019.

* Note: runway mode involving arrivals on Runway 09 and departures on Runway 16 implemented mid-2019.