

# Dec/Jan 2018 Peak Forecast

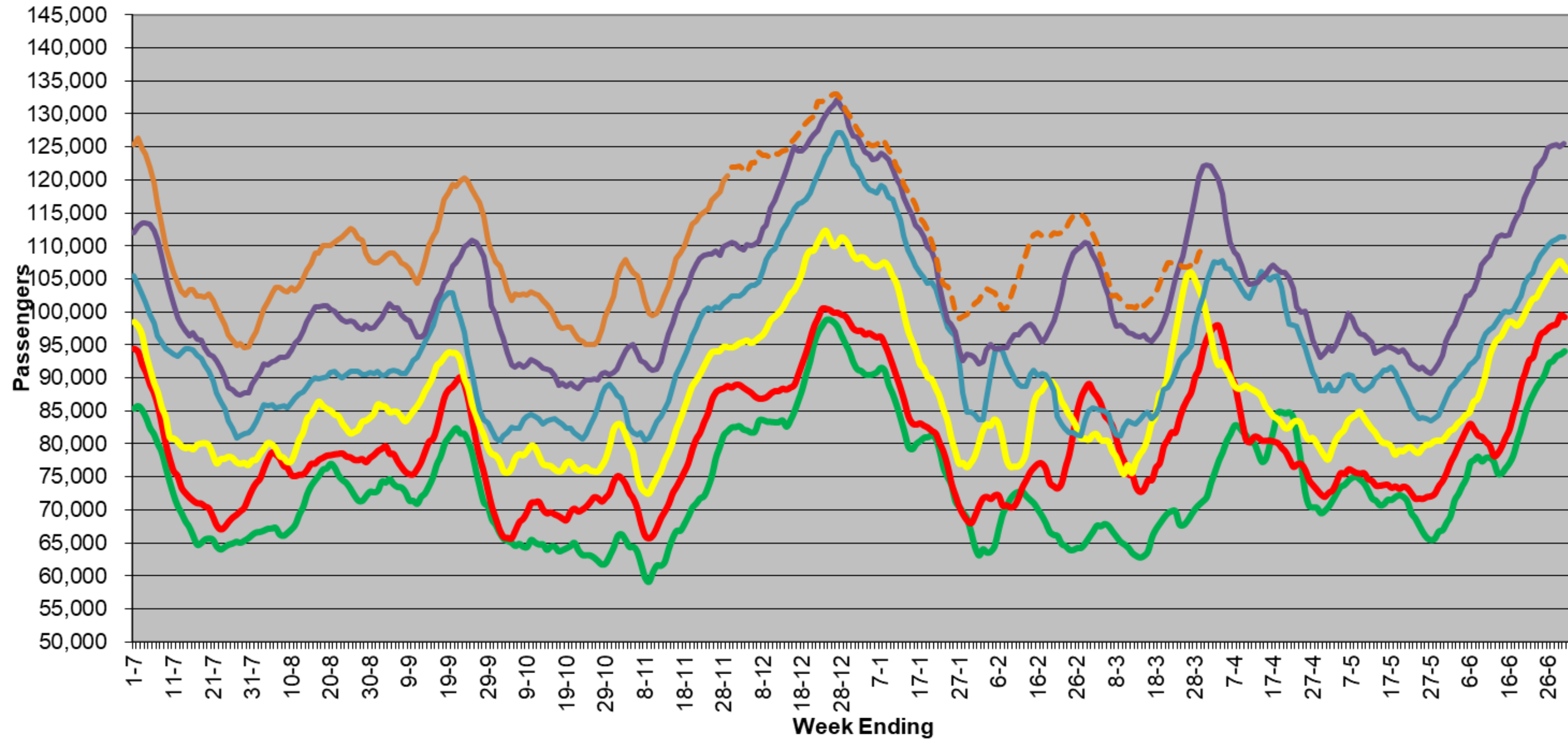
December 2018



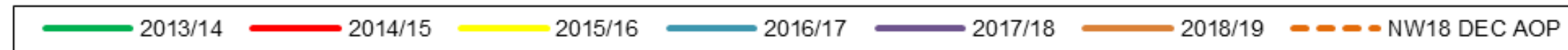
**MELBOURNE AIRPORT**

# T2

## Melbourne Airport T2 Weekly International Departing Passengers 2013/14-2018/19 to 30 Mar 19



Source: Department of Immigration

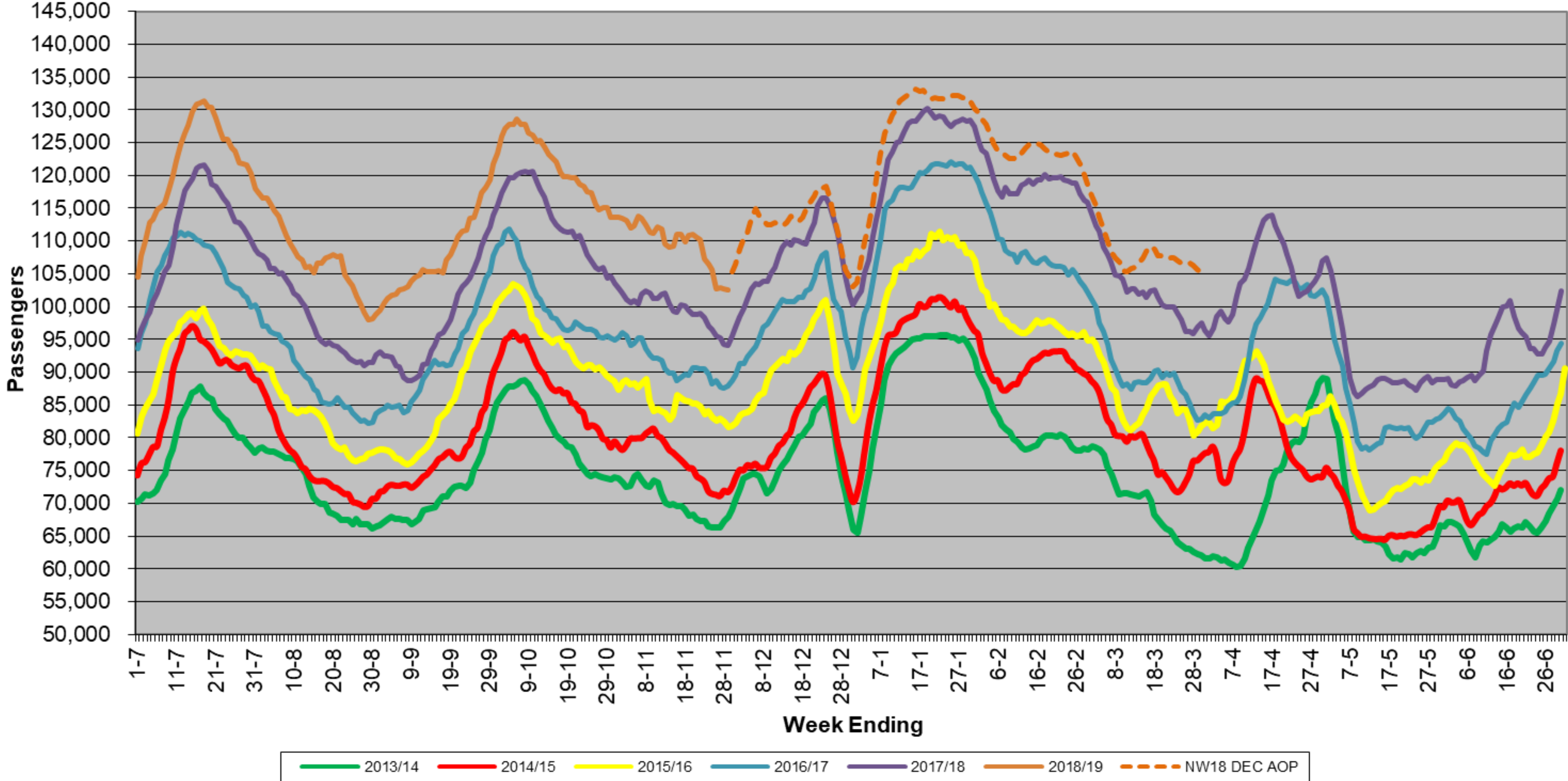




**T2**

# Melbourne Airport

## T2 Weekly International Arriving Passengers 2013/14-2018/19 to Mar 19

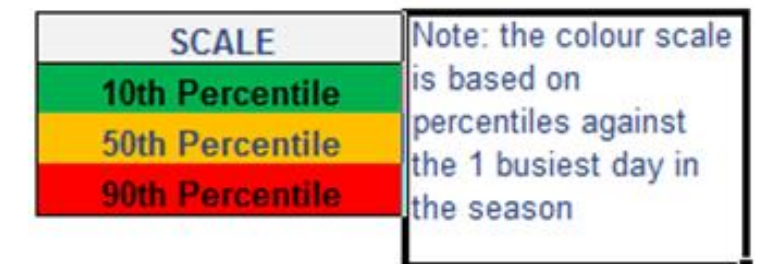


Source: Department of Immigration

# T2 Departures Forecast

- Expecting ~ 3% growth over last years holiday period
- Departures busy through all of December, especially Dec 9 – Jan 7
- Calendar forecast below highlights peak days

	M	Tu	W	Th	F	Sa	Su	Mon	Tue	Wed	Thu	Fri	Sat	Sun
<b>Dec</b>	26	27	28	29	30	1	2	17,847	17,595	16,490	17,618	17,876	17,744	18,127
	3	4	5	6	7	8	9	17,058	16,491	17,271	18,010	19,460	17,260	18,108
	10	11	12	13	14	15	16	16,873	17,023	17,196	18,397	19,595	18,249	18,894
	17	18	19	20	21	22	23	17,677	17,874	17,900	19,090	19,907	20,468	18,878
	24	25	26	27	28	29	30	18,053	18,399	18,206	19,146	19,095	18,729	18,258
<b>Jan</b>	31	1	2	3	4	5	6	16,899	17,253	17,600	18,245	18,338	18,592	18,496
	7	8	9	10	11	12	13	17,615	16,899	16,392	17,278	16,896	17,476	16,756
	14	15	16	17	18	19	20	16,526	15,867	15,417	15,401	15,985	16,526	14,966
	21	22	23	24	25	26	27	14,408	13,396	13,526	15,071	14,991	13,802	13,703
	28	29	30	31	1	2	3	14,857	13,716	14,499	15,700	15,528	15,055	14,193
<b>Feb</b>	4	5	6	7	8	9	10	14,582	13,302	13,384	14,331	15,826	16,213	16,163
	11	12	13	14	15	16	17	16,097	15,059	15,096	16,380	16,653	16,475	15,820
	18	19	20	21	22	23	24	15,846	15,101	15,665	16,204	16,898	16,659	17,196
	25	26	27	28	1	2	3	16,955	15,077	15,711	15,738	16,021	15,116	15,827
<b>Mar</b>	4	5	6	7	8	9	10	15,110	13,119	13,497	13,754	16,048	14,622	15,383
	11	12	13	14	15	16	17	14,290	13,126	13,416	14,711	15,405	15,073	15,965
	18	19	20	21	22	23	24	15,201	14,368	15,245	16,212	15,352	15,053	15,774
	25	26	27	28	29	30	31	14,835	14,266	15,661	15,853	17,409	16,126	-

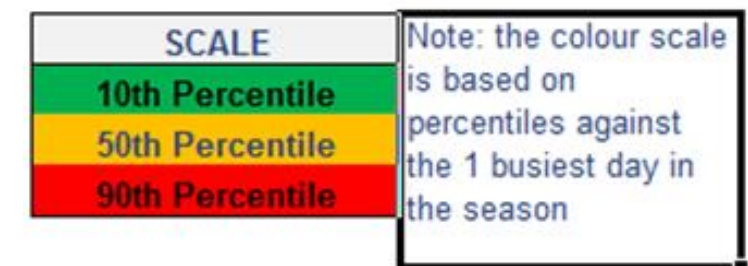


AOP forecast 30 Nov 2018

# T2 Arrivals Forecast

- Expecting ~3% growth over last years holiday period
- T2 International arrivals peak just prior to Xmas and then again all of January
- Calendar forecast below highlights peak days

	M	Tu	W	Th	F	Sa	Su	Mon	Tue	Wed	Thu	Fri	Sat	Sun
<b>Dec</b>	26	27	28	29	30	1	2	15,590	14,063	14,580	16,577	17,433	17,362	17,704
	3	4	5	6	7	8	9	16,238	14,955	14,980	16,216	16,471	16,601	17,063
	10	11	12	13	14	15	16	16,223	15,223	14,636	16,040	16,952	17,611	16,552
	17	18	19	20	21	22	23	15,983	15,890	15,629	17,247	17,910	18,713	16,688
	24	25	26	27	28	29	30	16,272	14,400	12,666	14,623	15,448	15,465	15,640
<b>Jan</b>	31	1	2	3	4	5	6	14,851	15,014	16,158	17,201	18,100	18,964	19,139
	7	8	9	10	11	12	13	18,838	18,021	17,302	18,933	18,937	20,237	19,492
	14	15	16	17	18	19	20	19,322	18,455	17,822	18,607	18,962	19,571	18,952
	21	22	23	24	25	26	27	19,391	18,420	17,764	19,002	19,129	19,496	18,989
	28	29	30	31	1	2	3	19,096	18,357	17,255	17,837	18,512	18,604	18,096
<b>Feb</b>	4	5	6	7	8	9	10	17,550	16,978	16,039	17,793	17,968	18,160	18,106
	11	12	13	14	15	16	17	18,291	17,069	16,863	18,215	18,284	17,944	18,079
	18	19	20	21	22	23	24	17,483	16,624	16,970	17,803	18,125	18,073	18,287
	25	26	27	28	1	2	3	17,859	15,764	15,863	16,082	16,709	16,217	16,826
<b>Mar</b>	4	5	6	7	8	9	10	16,088	13,994	13,932	14,545	15,867	15,465	15,651
	11	12	13	14	15	16	17	15,824	14,484	14,102	15,285	16,549	16,502	16,410
	18	19	20	21	22	23	24	15,305	13,609	14,044	15,037	16,573	16,476	15,860
	25	26	27	28	29	30	31	15,003	13,455	14,255	14,671	15,841	16,127	-



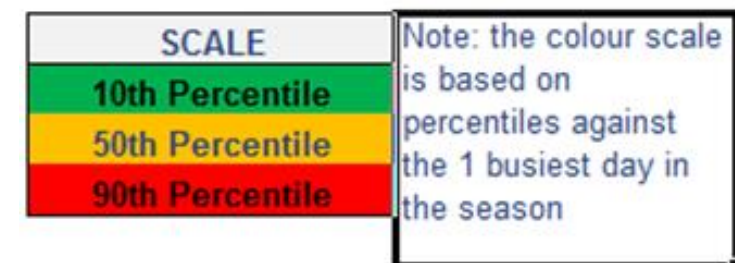
AOP forecast 30 Nov 2018



# T3 Forecast (Arrivals & Departures)

- Overall T3 peak PAX numbers will be lower over holiday periods as business travel declines. Friday is the peak day, Saturday the lightest
- This forecast is for all VA services and does not split the VA flights on Pier F in T4. Historically ~15% of VA PAX use pier F
- Calendar forecast below highlights peak days.

	M	Tu	W	Th	F	Sa	Su	Mon	Tue	Wed	Thu	Fri	Sat	Sun
<b>Dec</b>	26	27	28	29	30	1	2	23,800	21,047	21,079	23,101	26,684	15,873	20,344
	3	4	5	6	7	8	9	23,920	19,868	22,373	22,400	24,303	15,775	20,171
	10	11	12	13	14	15	16	20,807	19,308	19,905	20,121	22,136	14,643	18,082
	17	18	19	20	21	22	23	18,255	17,101	19,401	20,924	24,110	20,203	19,343
	24	25	26	27	28	29	30	18,055	14,246	19,833	22,767	22,104	17,127	19,136
<b>Jan</b>	31	1	2	3	4	5	6	14,601	20,212	21,439	20,886	20,654	16,254	20,956
	7	8	9	10	11	12	13	18,905	16,159	16,829	17,843	19,838	14,656	20,057
	14	15	16	17	18	19	20	20,033	17,925	18,675	19,656	22,921	15,919	21,562
	21	22	23	24	25	26	27	21,312	18,879	19,765	22,384	20,422	12,817	15,411
	28	29	30	31	1	2	3	20,891	17,094	14,710	15,372	19,174	11,799	18,177
<b>Feb</b>	4	5	6	7	8	9	10	17,787	17,745	18,525	18,780	24,677	13,843	21,153
	11	12	13	14	15	16	17	20,392	19,063	18,959	21,827	24,704	14,744	21,653
	18	19	20	21	22	23	24	22,095	20,409	21,832	22,870	26,205	15,772	21,641
	25	26	27	28	1	2	3	21,182	18,652	19,396	20,462	22,791	13,095	19,990
	<b>Mar</b>	4	5	6	7	8	9	10	20,443	18,519	19,181	21,814	24,894	14,761
11		12	13	14	15	16	17	22,360	19,814	20,514	22,620	24,685	14,059	22,272
18		19	20	21	22	23	24	22,158	19,095	21,023	23,216	24,685	14,059	22,272
25		26	27	28	29	30	31	22,158	19,095	21,023	23,216	24,648	15,453	-



AOP forecast 30 Nov 2018

# T4 Forecast (Arrivals & Departures)

- Overall T4 PAX numbers will be ~3 - 4% higher yoy with peak Dec 14th – Jan 29th
- Busiest day of ~34,000 PAX, Friday is busiest but almost all days in January > 30,000
- Calendar forecast below highlights peak days.

	M	Tu	W	Th	F	Sa	Su	Mon	Tue	Wed	Thu	Fri	Sat	Sun
<b>Dec</b>	26	27	28	29	30	1	2	28,420	22,795	25,446	25,448	29,070	24,768	26,168
	3	4	5	6	7	8	9	27,354	22,074	25,030	25,114	28,145	23,931	26,303
	10	11	12	13	14	15	16	27,307	22,332	24,054	23,746	31,048	28,169	29,446
	17	18	19	20	21	22	23	30,991	28,872	30,718	31,384	31,899	30,996	30,768
	24	25	26	27	28	29	30	31,679	28,448	31,908	32,278	33,474	31,587	31,576
<b>Jan</b>	31	1	2	3	4	5	6	31,723	30,557	31,719	31,809	33,238	30,674	31,269
	7	8	9	10	11	12	13	32,716	30,571	31,260	31,706	33,020	30,735	31,458
	14	15	16	17	18	19	20	32,683	30,501	30,633	31,823	34,202	31,149	31,874
	21	22	23	24	25	26	27	32,469	30,114	31,736	32,818	33,394	27,895	31,018
	28	29	30	31	1	2	3	31,179	27,802	22,033	22,606	26,860	22,043	25,640
<b>Feb</b>	4	5	6	7	8	9	10	25,425	20,422	22,530	23,398	28,633	24,066	27,624
	11	12	13	14	15	16	17	27,901	22,339	24,187	24,969	29,589	24,652	28,470
	18	19	20	21	22	23	24	28,649	23,043	25,406	25,248	30,054	25,087	27,890
	25	26	27	28	1	2	3	28,199	21,493	23,515	24,166	28,698	22,494	26,861
<b>Mar</b>	4	5	6	7	8	9	10	27,028	20,897	23,467	24,805	30,273	24,463	26,863
	11	12	13	14	15	16	17	28,569	23,142	24,298	24,595	28,578	23,571	27,418
	18	19	20	21	22	23	24	27,783	21,824	24,352	24,569	28,578	23,576	27,418
	25	26	27	28	29	30	31	27,783	21,824	24,352	24,569	28,981	24,583	-

SCALE	
10th Percentile	Note: the colour scale is based on percentiles against the 1 busiest day in the season
50th Percentile	
90th Percentile	

AOP forecast 30 Nov 2018

# T1 Forecast (Arrivals & Departures)

- Overall T1 peak PAX numbers will be lower over holiday periods as business travel declines. Friday is the peak day, Saturday the lightest
- Calendar forecast below highlights peak days.

	M	Tu	W	Th	F	Sa	Su	Mon	Tue	Wed	Thu	Fri	Sat	Sun
<b>Dec</b>	26	27	28	29	30	1	2	30,539	28,555	30,041	30,756	33,484	18,320	23,379
	3	4	5	6	7	8	9	27,743	25,940	29,790	30,619	31,168	18,243	20,928
	10	11	12	13	14	15	16	26,989	26,543	29,643	29,182	28,407	17,956	20,579
	17	18	19	20	21	22	23	23,027	22,125	24,254	24,406	25,349	20,598	16,841
	24	25	26	27	28	29	30	18,514	13,081	21,936	23,670	21,981	15,732	17,427
<b>Jan</b>	31	1	2	3	4	5	6	15,137	19,849	21,614	20,112	20,469	15,909	18,780
	7	8	9	10	11	12	13	20,954	18,964	20,165	20,047	20,904	16,402	20,400
	14	15	16	17	18	19	20	23,710	22,537	24,106	25,482	27,120	17,833	22,553
	21	22	23	24	25	26	27	25,423	23,716	26,575	28,708	24,087	13,461	22,777
	28	29	30	31	1	2	3	24,714	22,892	23,721	24,133	24,615	13,435	18,488
<b>Feb</b>	4	5	6	7	8	9	10	24,086	23,667	25,768	27,694	29,539	13,987	21,152
	11	12	13	14	15	16	17	26,866	25,921	27,211	28,663	30,083	15,470	22,532
	18	19	20	21	22	23	24	27,873	27,314	29,431	30,401	31,675	15,760	22,665
	25	26	27	28	1	2	3	27,531	25,187	27,267	27,824	28,218	12,757	21,287
	<b>Mar</b>	4	5	6	7	8	9	10	25,845	25,578	27,836	29,329	32,576	15,608
11		12	13	14	15	16	17	24,639	27,216	28,060	29,713	30,296	14,880	23,816
18		19	20	21	22	23	24	27,944	26,796	29,799	31,116	30,296	14,550	23,241
25		26	27	28	29	30	31	27,983	26,630	29,774	31,519	31,435	16,562	-

SCALE	
10th Percentile	Note: the colour scale is based on percentiles against the 1 busiest day in the season
50th Percentile	
90th Percentile	

AOP forecast 30 Nov 2018